



العاصمة للمقاولات
AL ASEMA CONTRACTING

التطوير سمتنا

AL ASEMA CONTRACTING

WHO ARE WE

LEARN

MORE

Al-Asema Contracting stands as one of the leading firms operating under the umbrella of the Egyptian Federation for Construction and Building Contractors (EFCBC), registered under No. 28386.

Since its establishment in 2004, **Al-Asema Contracting** has maintained a distinguished position in the general contracting sector, consistently delivering outstanding results across a wide range of disciplines.

Backed by extensive expertise, the company is powered by a highly qualified team of engineers, technicians, and skilled professionals, whose combined scientific knowledge and practical experience ensure excellence in every project we undertake.



العاصمة للمقاولات
AL ASEMA CONTRACTING

التطوير سمتنا

BOARD OF DIRECTORS



Engineer
**Ahmed Abdel
Fattah Sayed**



Engineer
**Yehia Ahmed
Fouad**



Engineer
**Ayman Abdel
Fattah Sayed**

— TABLE OF ● CONTENTS

Projects;

01	<i>Bin Zayed Axis</i>	11	<i>Benha University</i>
02	<i>Geneva Road Expansion Project</i>	12	<i>Tahya Misr Village, Sidi Abdel Rahman</i>
03	<i>Ayan Residential Complex Project</i>	13	<i>Lighting Project for the Alamein International Coastal Road</i>
04	<i>Al-Hamam Canal Project</i>	14	<i>Asmarat Corniche Recreational Walkway Project</i>
05	<i>Development of the Axes of Arab League Street, Ahmed Orabi and Bashteel</i>	15	<i>Military Entity</i>
06	<i>South Valley Development Project (Toshka)</i>	16	<i>Sharm El-Sheikh Sloping Concrete</i>
07	<i>Sokhna Tunnel Road Completion Project</i>	17	<i>Shinzo Abe Axis</i>
08	<i>Yasser Rizk Axis Development Works</i>	18	<i>Intelligence Building, Cairo International Airport</i>
09	<i>Heliopolis Development</i>		
10	<i>Hasaballah El Kafrawy Axis</i>	19	

WHAT DO YOU KNOW ABOUT OUR COMPANY?

Development Is Our Hallmark

We constantly strive to exert our utmost efforts to reach the appropriate and required standards of development in today's ever-evolving world.

We take pride in offering innovative and integrated solutions that cover all project stages — from planning and design to execution and delivery.

Our continuous goal is to achieve the highest levels of quality and efficiency, adhering to international standards and ensuring the satisfaction of our clients.

OUR GOAL

The goal includes raising the quality and efficiency of our work, combining speed of execution with quality. The company always strives to provide continuous training to improve the capabilities of its staff in the work team to ensure the highest quality of our services and their execution with the highest quality and accuracy.

A L A S E M A C O N T R A C T I N G

GOAL

AL ASEMA



AL ASEMA CONTRACTING
SUPPLIERS



01

Road Construction Works

Covering all its phases

02

Electromechanical works and communication networks

Design, planning, and implementation of internal and external electrical networks and road lighting

03

Design and implementation of water networks

Supply - Drainage

04

Bridge Constructive works

Gabion - Slope concrete

05

Landscaping and ornamental planting works

Hardscape - Softscape

06

Building Construction Works

Concrete - Steel



The standard works and landscaping were completed on the central island, 625 meters long, and the northern island, approximately 2900 meters long, on the Northern Mohammed Bin Zayed Axis in the New Administrative Capital

Bin Zayed Axis

Landscape

A L A S E M A C O N T R A C T I N G



PALM TREES
1000



3 PLANTING THE LONG CENTRAL
ISLAND
KM



18 PROJECT IMPLEMENTED IN
MONTHS



AL ASEMA CONTRACTING



Geneva Road Expansion Project

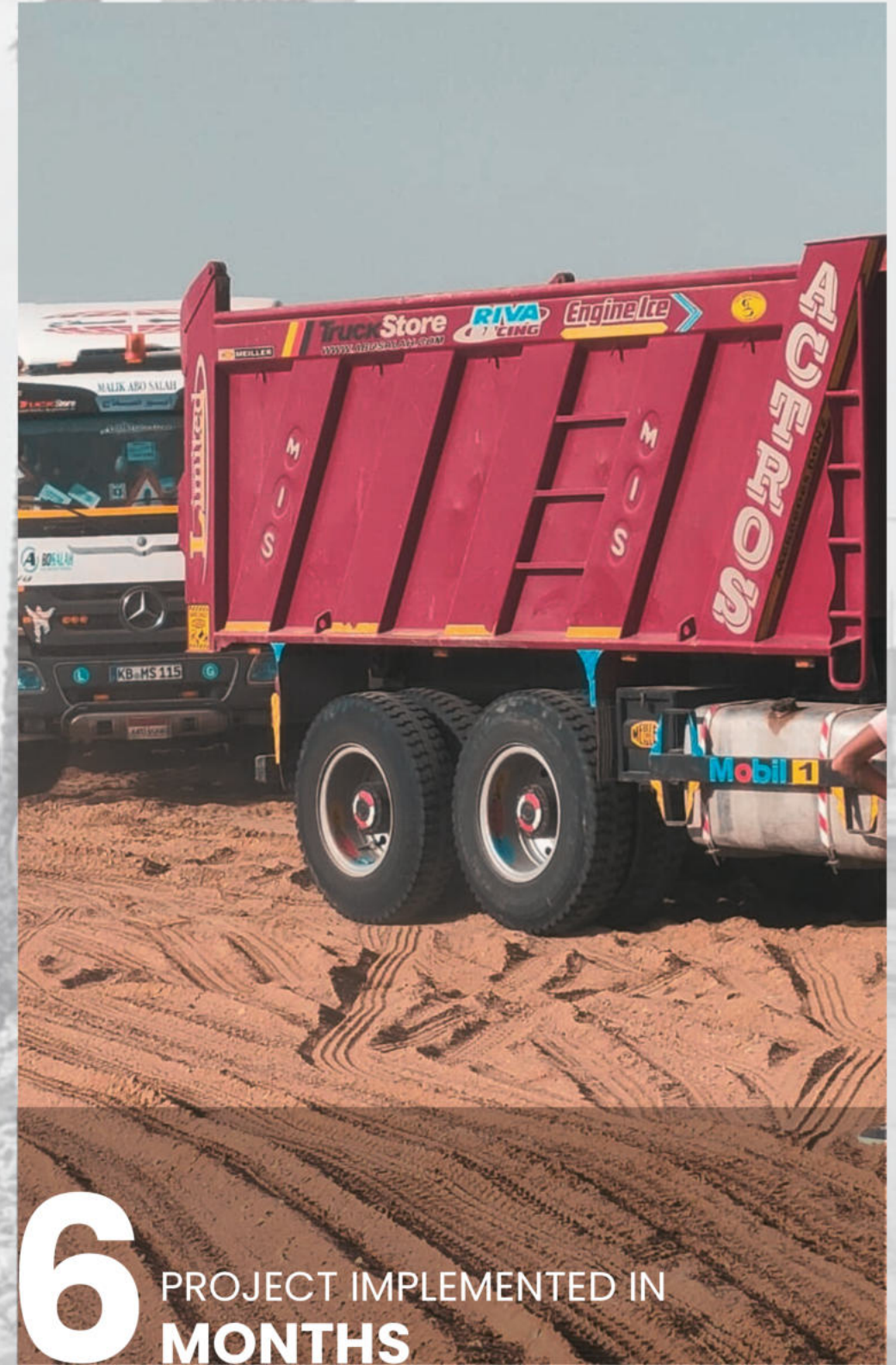
AL ASEMA CONTRACTING



62 SUPPLY AND INSTALLATION
OF BASE LAYERS
THOUSAND m²



94 SUPPLY AND INSTALLATION
OF GRAVE SOIL
THOUSAND m²



6 PROJECT IMPLEMENTED IN
MONTHS



78 CUTTING WORKS IN COHESIVE SOIL
THOUSAND m²



Ayan Residential Complex Project

Landscaping and Internal Roads

AL ASEMA CONTRACTING



40

SUPPLY AND INSTALLATION OF ASPHALT SURFACE AND BINDER COURSE
THOUSAND m²



30

CONSTRUCTION OF INTERNAL ROADS WITH A LENGTH OF
km



110 SUPPLY AND COMMISSIONING OF BASE LAYERS
THOUSAND m²



600 SUPPLY AND OPERATION OF WET SOIL OF AMOUNT OF
THOUSAND m³



400 EXCAVATION WORKS IN COHESIVE SOIL OF
THOUSAND m³



A 7km section.

Al-Hamam Canal Project

A L A S E M A C O N T R A C T I N G



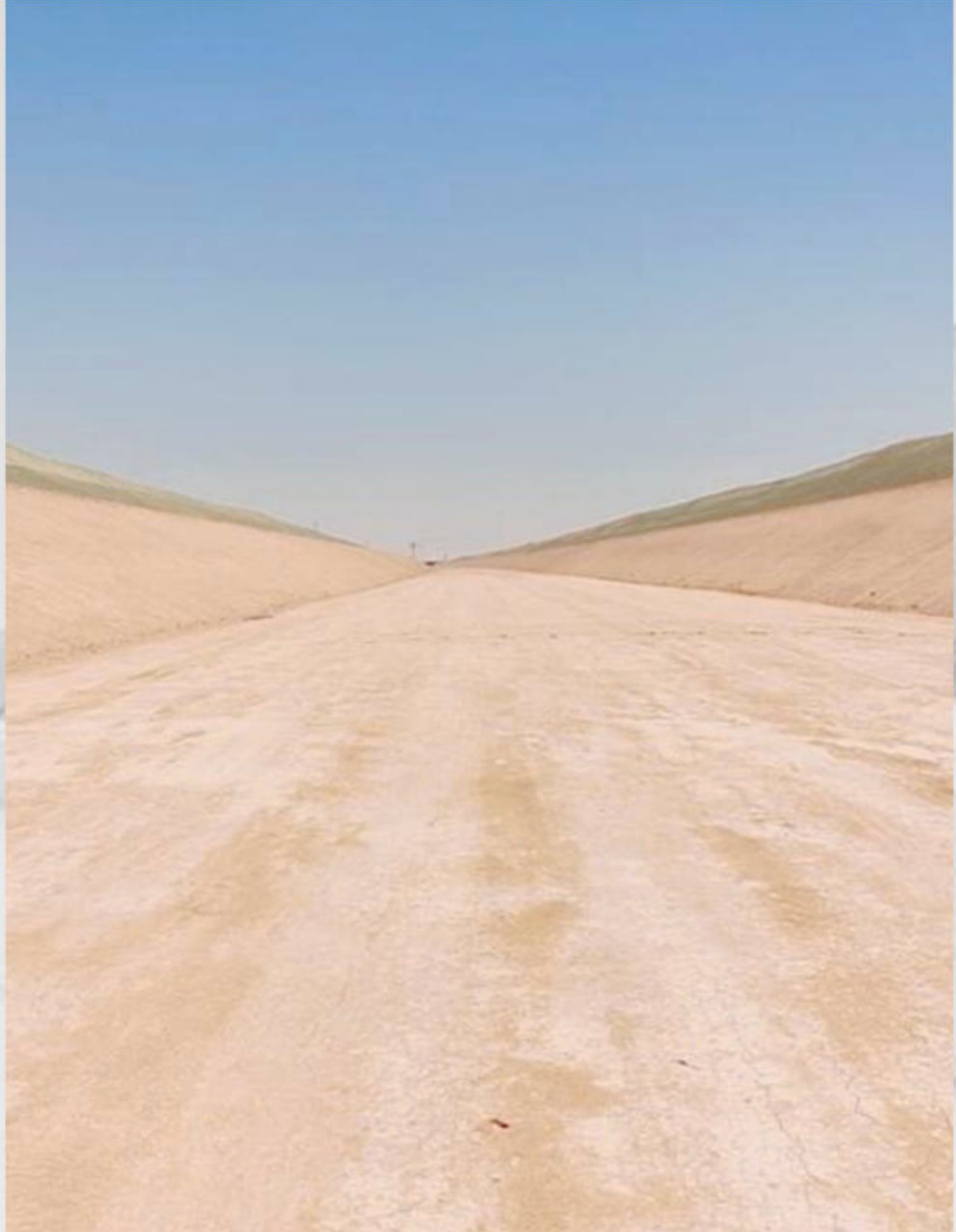
240

SLOPE FORMATION
WORKS OF SIDE SLOPES
FOR
THOUSAND m²



1.8

CUTTING WORKS IN
COHESIVE SOIL OF
MILLION m³



8

PROJECT IMPLEMENTED IN
MONTHS



Development of the Axes of Arab League Street, Ahmed Orabi and Bashteel

AL ASEMA CONTRACTING



240 CUTTING WORKS
THOUSAND m²



16 LENGTH OF AXES
km



10 PROJECT IMPLEMENTED IN
MONTHS



300

REPLACEMENT LAYER ESTIMATED AT MORE THAN
THOUSAND m²



128

SUPPLY AND INSTALLATION OF BASE LAYERS
THOUSAND m²



South Valley Development Project (Toshka)

AL ASEMA CONTRACTING



1.2 EXCAVATION WORKS IN
ROCKY SOIL
MILLION m²



9 BACKFILLING, CUTTING, AND
LEVELING WORKS
MILLION m²



10 PROJECT IMPLEMENTED IN
MONTHS



18

RECLAMATION AND LEVELING OF
AGRICULTURAL LAND

AL ASEMA CONTRACTING



Sokhna Tunnel Road Completion Project

AL ASEMA CONTRACTING



32.5

OVER 32,500 M³ OF CONCRETE WAS
POURED FOR SLOPES ALONG THE ROAD
THOUSAND m²



5

OVER 5,000 LINEAR METERS OF CURBS WERE POURED.
THOUSAND METRES



18 PROJECT AREA
THOUSAND m²



55 PROJECT IMPLEMENTED IN
DAYS





Yasser Rizk Axis Development Works

A L A S E M A C O N T R A C T I N G



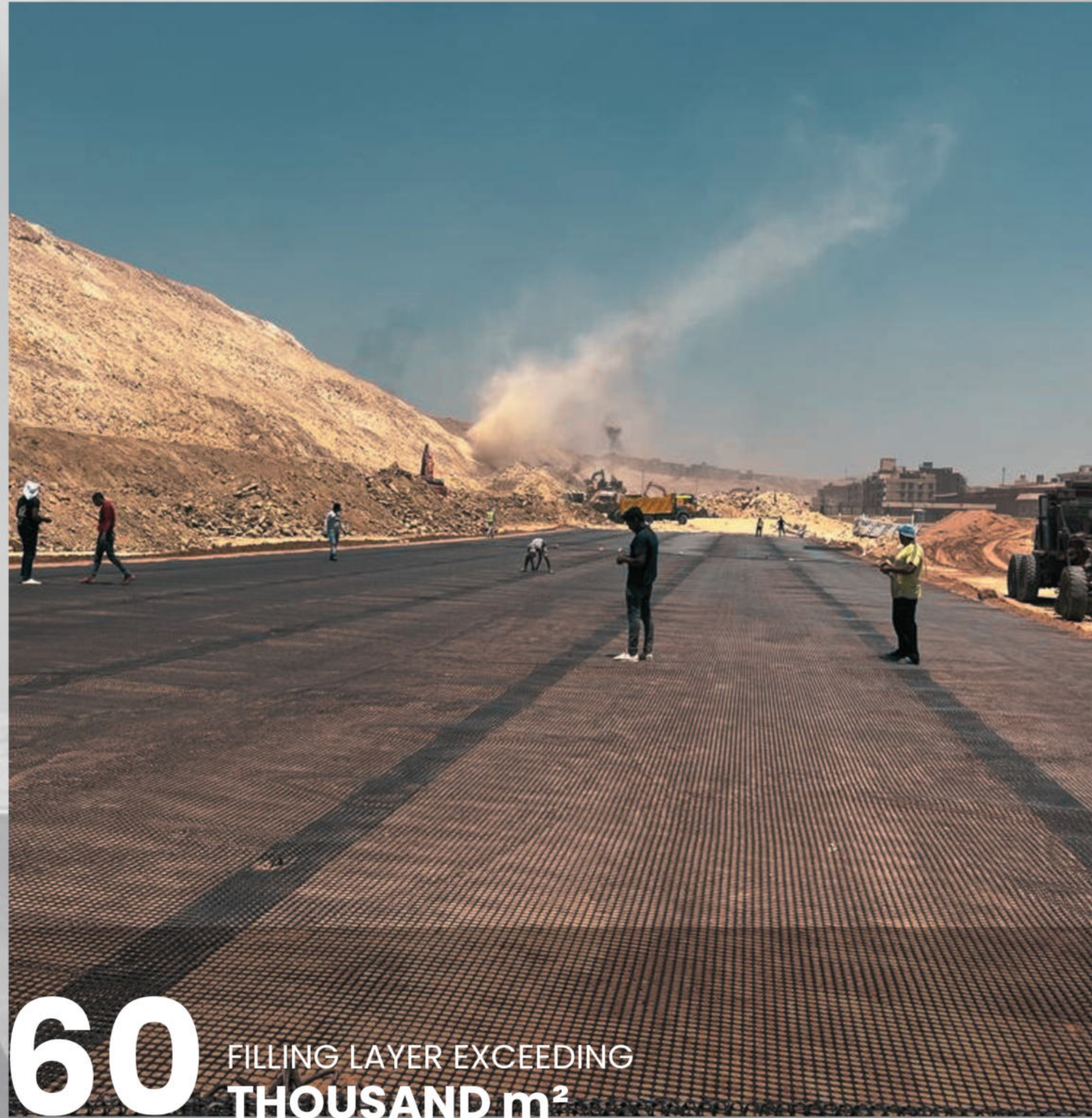
7 LENGTH OF AXIS
KM



MORE THAN
530 WAS DRILLED INTO THE
ROCK.
THOUSAND m²



3 PROJECT IMPLEMENTED IN
MONTHS



60 FILLING LAYER EXCEEDING
THOUSAND m²



20 BASE LAYER EXCEEDING
THOUSAND m²



Heliopolis Development

Implementation of development works from Ismailia Square to the Military Academy wall

A L A S E M A C O N T R A C T I N G

EXECUTION OF 3 LAYERS OF ASPHALT WITH A TOTAL QUANTITY EXCEEDING 110,000 M².



1.5 BASE LAYER EXCEEDING THOUSAND m²

EXECUTION OF CONCRETE CURB WORKS WITH A QUANTITY EXCEEDING 3,000 M³, AND ROUNDABOUT WORKS EXTENDING MORE THAN 1,500 LINEAR METERS.



5 FILLING LAYER EXCEEDING THOUSAND m²

FOCUSED ON IMPROVING AND EXPANDING THE ROAD NETWORK INSIDE THE UNIVERSITY CAMPUS TO FACILITATE MOVEMENT AND ACCESS TO THE VARIOUS BUILDINGS AND FACILITIES.



25 PROJECT IMPLEMENTED IN DAYS



15 EXCAVATION IN ROCKS WITH AN ESTIMATED QUANTITY OF MORE THAN **THOUSAND m²**



7 ROAD WORKS OVER A DISTANCE OF **KM**



Hasaballah El Kafrawy Axis

Site Planning and Internal Road Construction

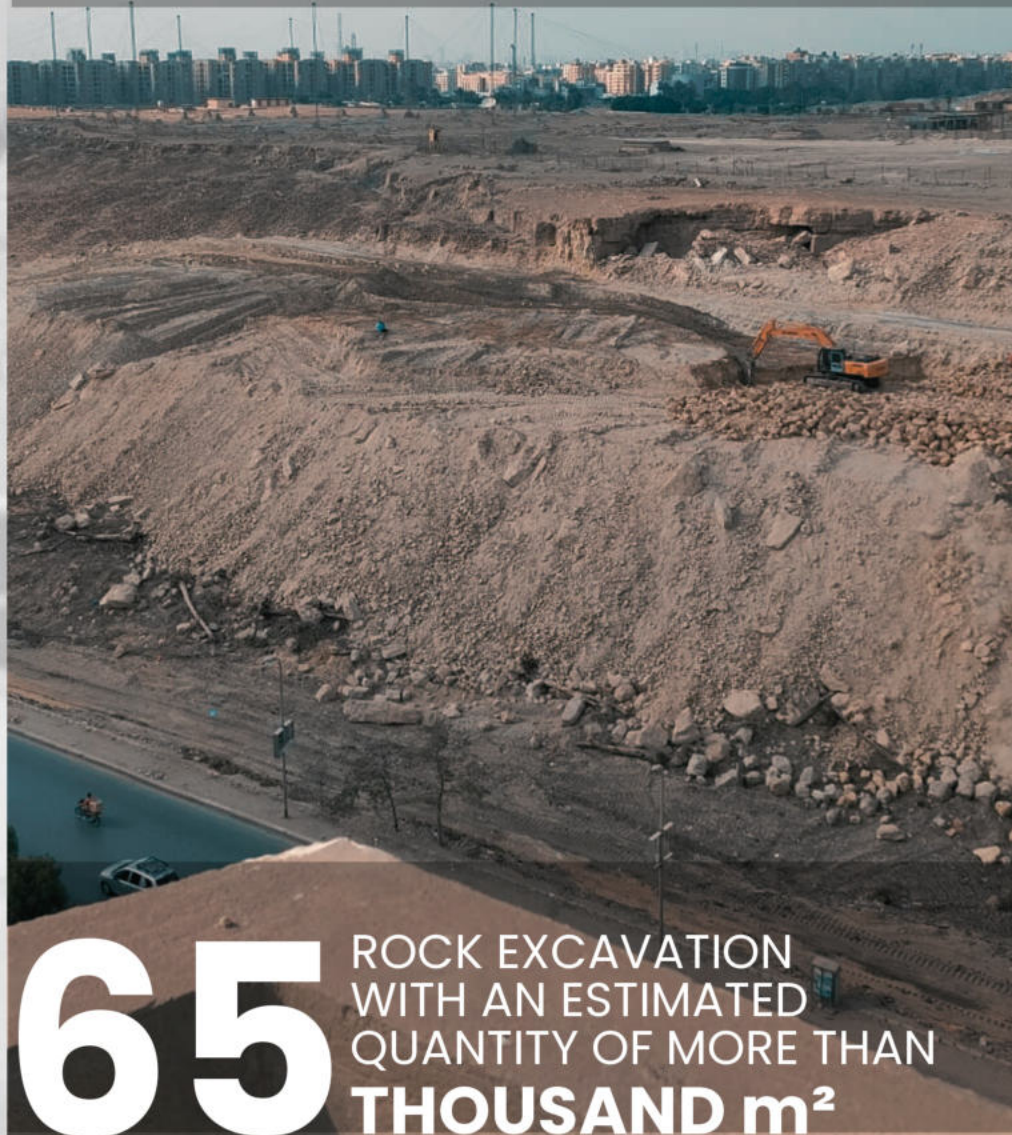
A L A S E M A C O N T R A C T I N G

SOIL LEVELING WORKS WITH A TOTAL AREA OF 80,000 M², EXECUTED OVER LAYERS WITH A THICKNESS OF 0.25 M PER LAYER TO ACHIEVE THE REQUIRED DESIGN LEVEL.



5 ROAD AXIS LENGTH
KM

CUTTING WORKS AND REMOVAL OF ROCKY FORMATIONS USING MECHANICAL EQUIPMENT AND EXCAVATORS WITH A TOTAL QUANTITY OF 300,000 M³, TRANSPORTED TO PUBLIC DUMPING SITES.



65 ROCK EXCAVATION
WITH AN ESTIMATED
QUANTITY OF MORE THAN
THOUSAND m³

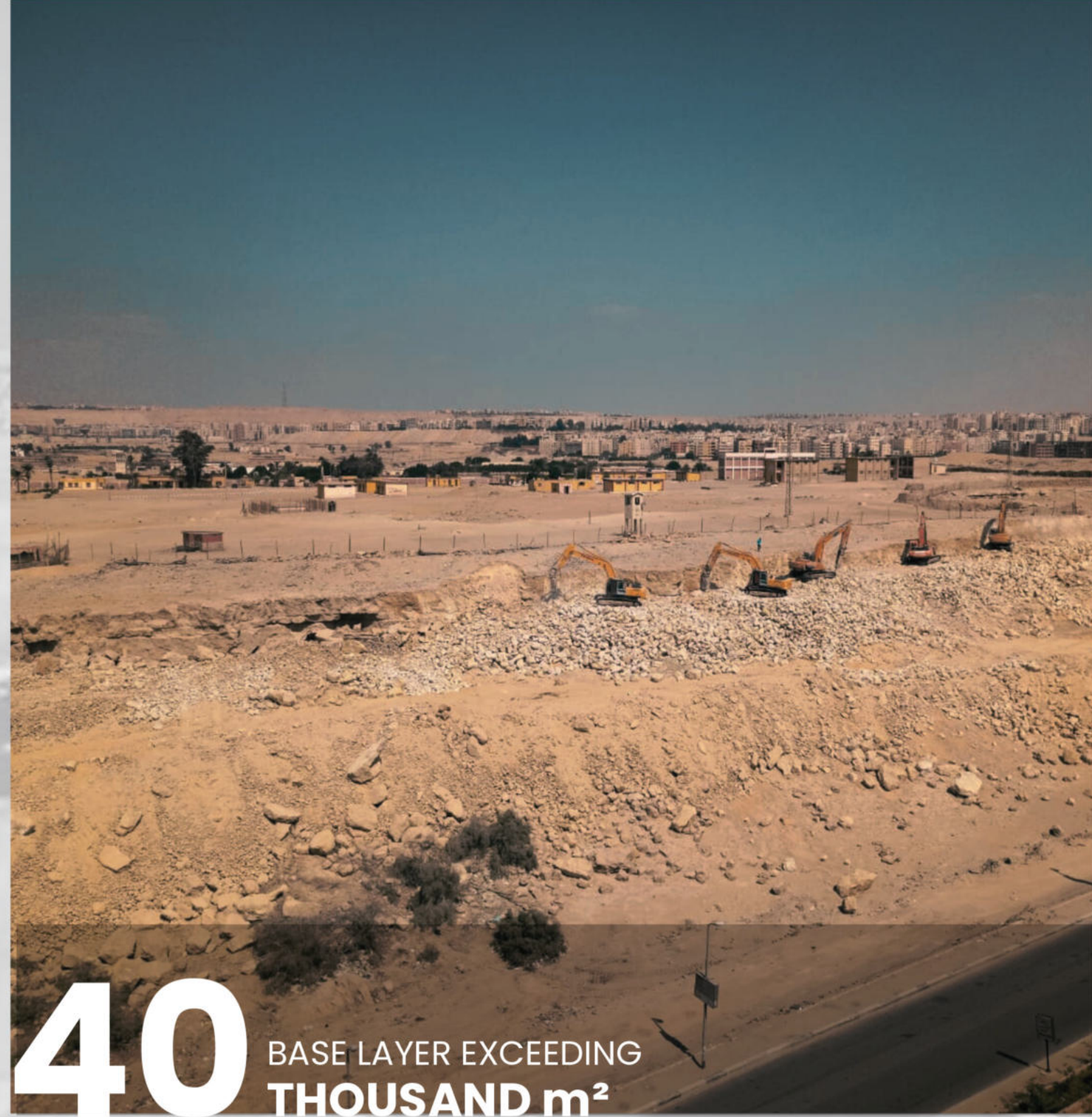
CONSTRUCTION OF BINDER AND SURFACE ASPHALT LAYERS WITH A TOTAL AREA OF 40,000 M², IN ADDITION TO CONSTRUCTING SIDE SLOPES AND SPRAYING A PRIMER COAT ACCORDING TO GENERAL ROAD AND HIGHWAY SPECIFICATIONS.



3 PROJECT IMPLEMENTED IN
MONTHS



15 FILLING LAYER EXCEEDING
THOUSAND m²



40 BASE LAYER EXCEEDING
THOUSAND m²



Benha University

Site Planning and Internal Road Construction

A L A S E M A C O N T R A C T I N G

THE FOCUS WAS ON IMPROVING AND EXPANDING THE ROAD NETWORK WITHIN THE UNIVERSITY CAMPUS TO FACILITATE MOVEMENT AND ACCESS TO VARIOUS DEPARTMENTS AND FACILITIES.



37 ROAD WORKS
FEDDANS

INTERLOCK FINISHING WORKS WITH A QUANTITY OF MORE THAN 25,000 LINEAR METERS AND CURB WORKS WITH A LENGTH OF MORE THAN 7,000 LINEAR METERS.



MORE THAN
350 WERE EXCAVATED
USING EXCAVATORS
AND LOADERS.
THOUSAND m³

THE PROJECT INCLUDES IMPROVING THE ROAD INFRASTRUCTURE TO MEET THE GROWING NEEDS OF THE UNIVERSITY.

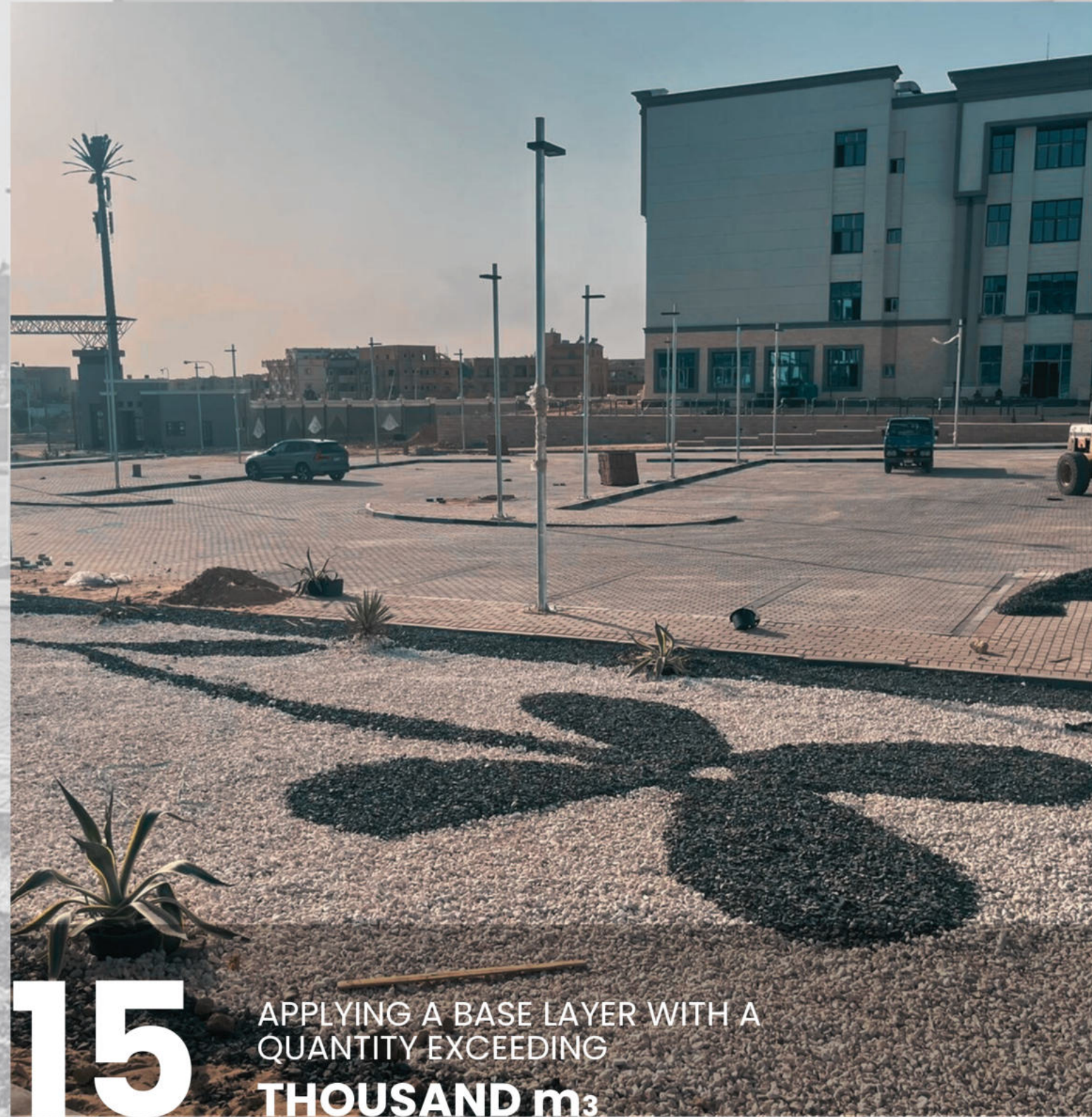


18 PROJECT IMPLEMENTED IN
MONTHS



35

A REPLACEMENT LAYER OF RED SOIL WAS CREATED WITH A QUANTITY OF MORE THAN **THOUSAND m³**



15

APPLYING A BASE LAYER WITH A QUANTITY EXCEEDING **THOUSAND m³**



Tahya Misr Village, Sidi Abdel Rahman

Internal Roads Improvement Project, Concrete Structure and Finishing Works for the Main Gate

A L A S E M A C O N T R A C T I N G



7 INTERNAL ROAD LENGTH
KM



126 SUPPLY AND
INSTALLATION OF ASPHALT
BINDER AND SURFACE
COURSES
THOUSAND m²

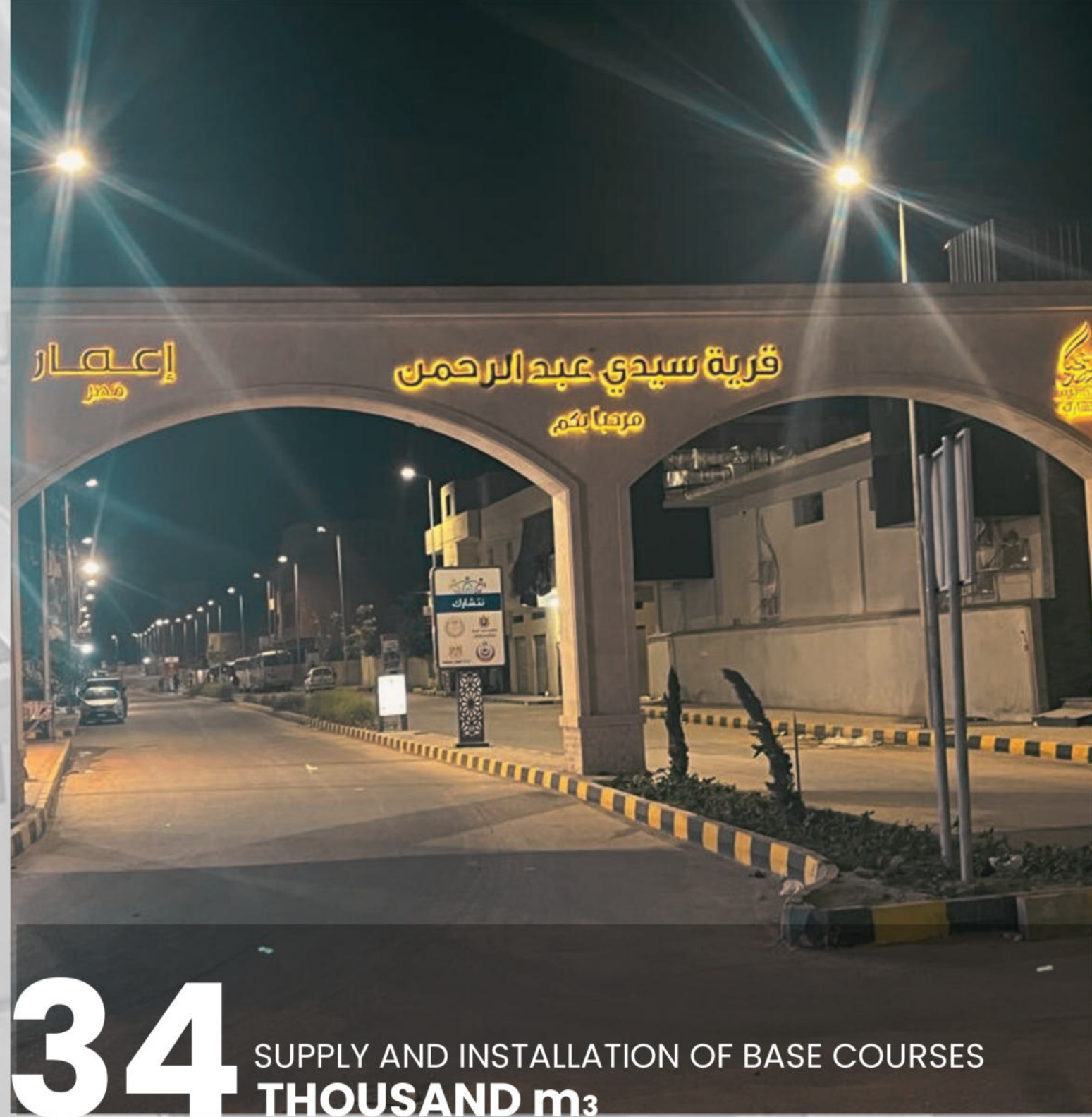


60 PROJECT IMPLEMENTED IN
DAYS



94

SUPPLIED AND INSTALLED A 10 METRE TALL COLUMNS
COLUMNS



34

SUPPLY AND INSTALLATION OF BASE COURSES
THOUSAND m³



Lighting Project for the Alamein International Coastal Road

AL ASEMA CONTRACTING

CAPITAL CONTRACTING CONTINUES TO EXECUTE ELECTRICAL AND CONSTRUCTION WORKS WITH HIGH EFFICIENCY, INSTALLING ADVANCED ELECTRICAL PANELS TO ENSURE THE HIGHEST STANDARDS OF QUALITY AND SUSTAINABILITY IN THE PROJECT.



55 AXIS LENGTH
KM

EXECUTING FOUNDATION WORK FOR COLUMNS WITH PRECISION AND EFFICIENCY TO ENSURE STABILITY AND DURABILITY ACCORDING TO THE HIGHEST QUALITY AND SAFETY STANDARDS.



55 SUPPLY AND INSTALLATION
OF HIGH MAST, 25-METRE
COLUMNS

EXECUTING ELECTRICAL INFRASTRUCTURE PROJECTS TO THE HIGHEST QUALITY STANDARDS, FROM SUPPLYING AND INSTALLING ELECTRICAL PANELS TO ESTABLISHING MODERN LIGHTING SYSTEMS, TO ENSURE THE EFFICIENCY AND SUSTAINABILITY OF ELECTRICAL NETWORKS.



18 PROJECT IMPLEMENTED IN
MONTHS



650 SUPPLY AND INSTALLATION OF HIGH MAST,
12-METRE
COLUMNS

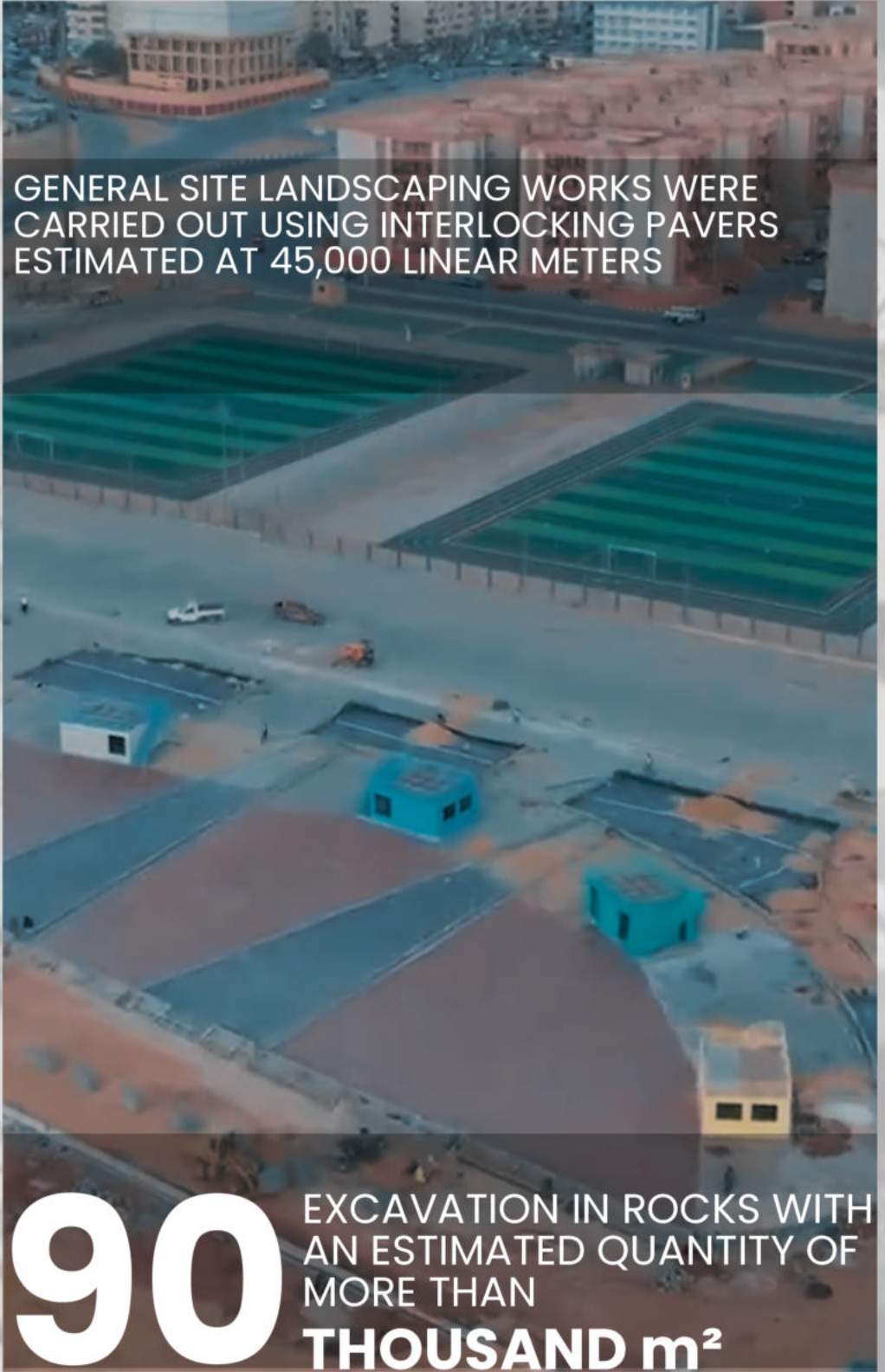


1190 SUPPLY AND INSTALLATION OF HIGH MAST,
25-METRE
COLUMNS



Asmarat Corniche Recreational Walkway Project

A L A S E M A C O N T R A C T I N G





MORE THAN

100

TONS STEEL WAS USED



20

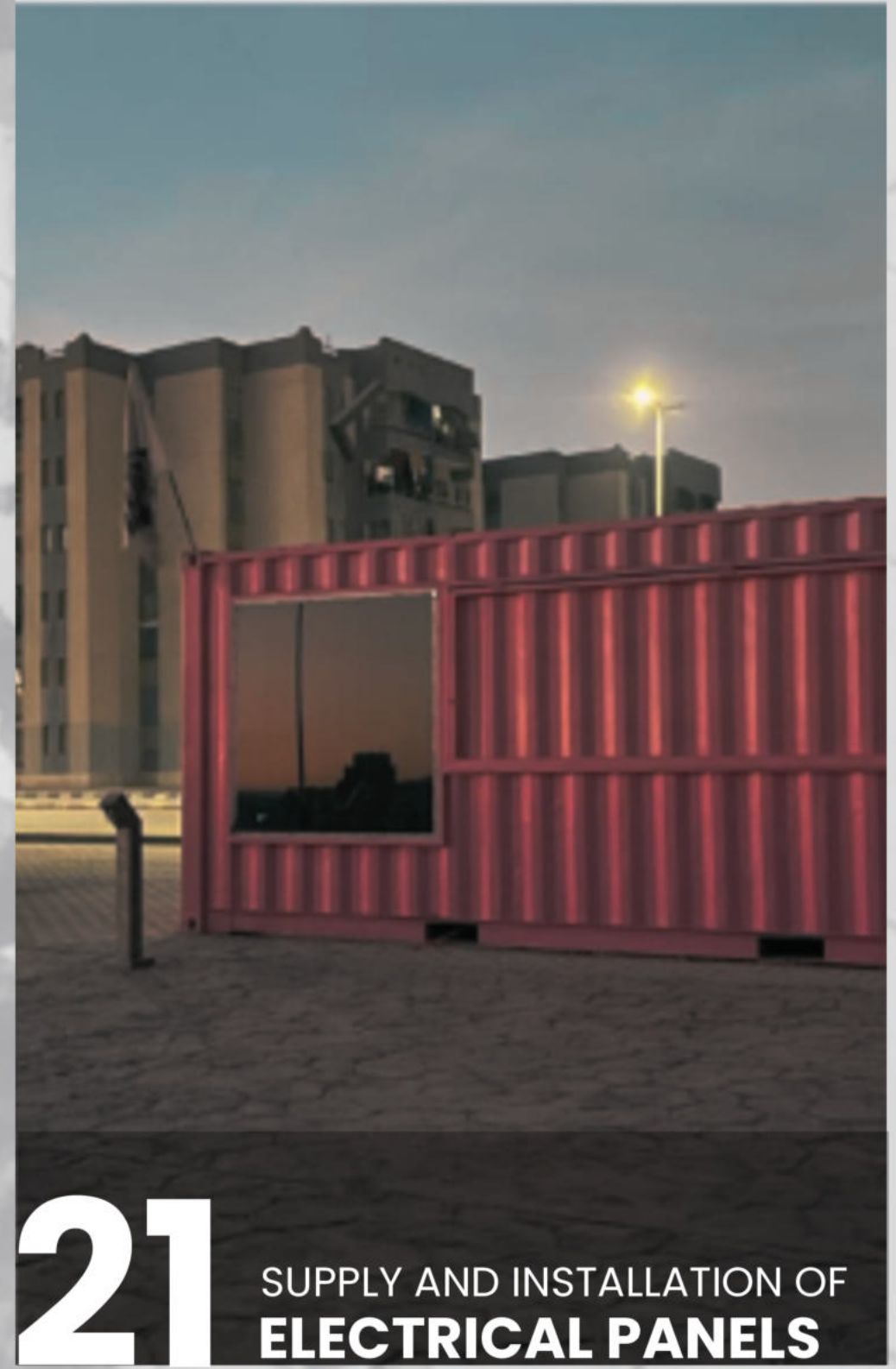
CONCRETE WAS USED IN THE QUANTITY OF
THOUSAND m²



55 AXIS LENGTH
KM



65 SUPPLY AND INSTALLATION
OF 4-METRE HEIGHT
INDIVIDUAL POLE



21 SUPPLY AND INSTALLATION OF
ELECTRICAL PANELS



75

THE COMPANY CARRIED OUT ELECTRICAL WORKS FOR THE ASMARAT CORNICHE PROJECT, COVERING AN AREA OF APPROXIMATELY **THOUSAND m²**



434

SUPPLY AND INSTALLATION OF 4-METRE HEIGHT **DOUBLE POLE**

LIGHTING WORKS
AL ASEMA CONTRACTING



Military Entity

AL ASEMA CONTRACTING



17 A CURB WAS CONSTRUCTED WITH A LENGTH OF MORE THAN **THOUSAND m²**



12 CONCRETE WORK WAS CARRIED OUT WITH AN ESTIMATED VOLUME OF **THOUSAND m²**



12 PROJECT IMPLEMENTED IN LESS THAN **DAYS**



5

FINISHING WORK WAS CARRIED OUT AT THE STRATEGIC COMMAND HEADQUARTERS, COVERING AN AREA OF MORE THAN **THOUSAND m²**



Sharm El-Sheikh Sloping Concrete

A L A S E M A C O N T R A C T I N G



53

COMPLETION WORKS OF THE PROJECT WERE CARRIED OUT OVER AN AREA EXCEEDING **THOUSAND m²**



15

SLOPE CONCRETE CASTING WAS COMPLETED ALONG THE ROAD WITH A VOLUME OF MORE THAN **THOUSAND m²**



2

PROJECT IMPLEMENTED IN LESS THAN **MONTHS**



4

CASTING CURBSTONES WITH A QUANTITY EXCEEDING
THOUSAND LINEAR METRES



Shinzo Abe Axis

AL ASEMA CONTRACTING

MORE THAN

6 INTERLOCK FINISHING
WORKS WERE EXECUTED
THOUSAND m²

25 A REPLACEMENT LAYER
USING RED SOIL WAS
EXECUTED WITH AN
ESTIMATED VOLUME OF
THOUSAND m³

4 LINEAR METERS OF
CURBSTONE WORKS
WERE EXECUTED
THOUSAND m²



2 SUPPLEMENTARY WORKS
WERE CARRIED OUT ON
THE AXIS FOR A LENGTH
KM

MORE THAN EXCAVATION WAS
COMPLETED USING
EXCAVATORS AND
LOADERS.
19 **THOUSAND m³**

3 PROJECT IMPLEMENTED
IN LESS THAN
MONTHS

AL ASEMA CONTRACTING



Intelligence Building, Cairo International Airport

A L A S E M A C O N T R A C T I N G



70 REINFORCEMENT STEEL WAS USED IN A QUANTITY EXCEEDING **TONS**



1 CONCRETE WORKS WERE CARRIED OUT WITH A VOLUME EXCEEDING **THOUSAND m³**



3 PROJECT IMPLEMENTED IN LESS THAN **MONTHS**



2

THE BUILDING WAS EXECUTED, CONSTRUCTED, AND FINISHED OVER AN AREA OF APPROXIMATELY
ACRES

AL ASEMA CONTRACTING



26th of July Axis

AL ASEMA CONTRACTING



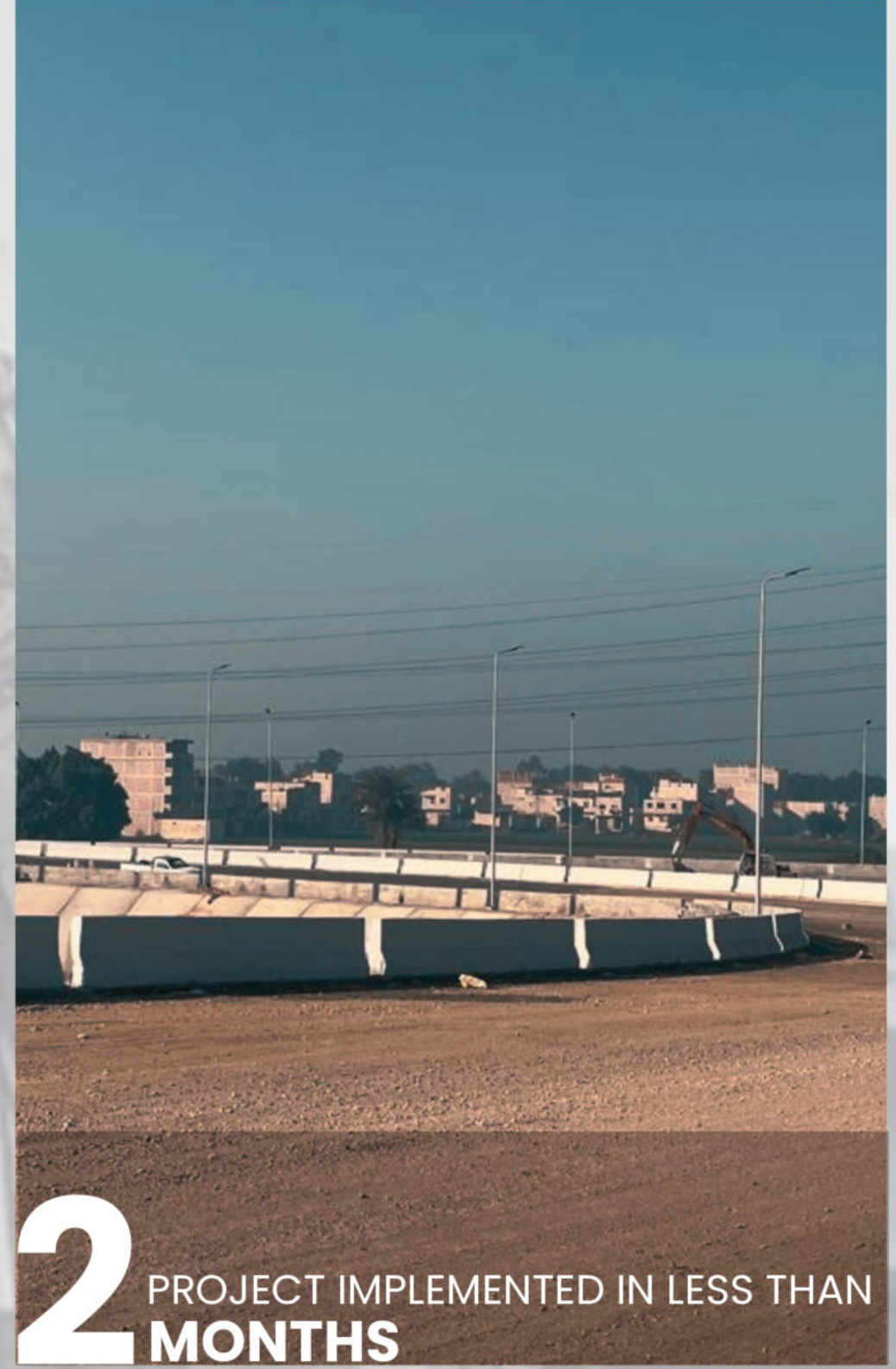
340

SUPPLY AND
INSTALLATION OF 12-
METRE HEIGHT HIGH
MAST
POLE



127

SUPPLY AND INSTALLATION
OF 25-METRE HEIGHT
HIGH MAST
POLE



2

PROJECT IMPLEMENTED IN LESS THAN
MONTHS



50 REINFORCEMENT STEEL WAS USED IN A QUANTITY EXCEEDING TONS



12 SUPPLY AND INSTALLATION OF ELECTRIC PANELS



467 CASTING OF PILES

DEVELOPMENT IS OUR HALLMARK

WWW.ALASEMACONTRACTING.COM

CONTACT US

**We look forward to work
with you**

 **Phone : (+20) 112 738 2222 - (+20) 106 800 0406 - (+20) 115 911 9977**

 **Website : www.alasemacontracting.com**

 **Email : tech.office@alasemacontracting.com**

 **Address 01 : Building No. 120, One Kattameya, Cairo, Egypt**

 **Address 02 : 333 King Faisal Street, Al-Sheroq Buildings, Giza, Egypt**



العاصمة للمقاولات
AL ASEMA CONTRACTING

التطوير سمتنا